



RIA Pulse Report

Data Up Through: 01/07/2022

Report Contents

Cash Levels Index
Risk Sentiment Sums
Risk Sentiment Volume
Advisor Activity Sums
Advisor Activity Volume
Client Contributions
Client Growth
MF / ETF Style Winners & Losers
MF / ETF Winners & Losers
Stock Winners & Losers
Disclosure

* Not a Subscriber and want to receive this weekly? Simply send an email to Pulse@investnetanalytics.com, and we'll add you!



About Envestnet Analytics

What We Do

Our dedicated analytics team is comprised of data scientists, analysts, and wealth domain experts who work to answer your key business questions completely, simply, quickly, and sometimes before you even think of them.

Envestnet Analytics delivers market-leading insights to Advisors, Wealth Enterprise Home Office executives, Money Managers, and Financial Institutions through its omni-channel platform, Envestnet Intelligence. Our out of the box solutions are designed to deliver answers to the questions that matter most. Custom solutions take it a step further to optimize the dashboards specific to your firm by including additional data sources, custom labels, custom fields, proprietary risk profile rules, data mapping, and more.

Our traditional dashboards and question and answer-based user interface are available via desktop, mobile app, Alexa skill, reports, and notifications to get you the insights you need, wherever you are.

WE WANT YOUR FEEDBACK!

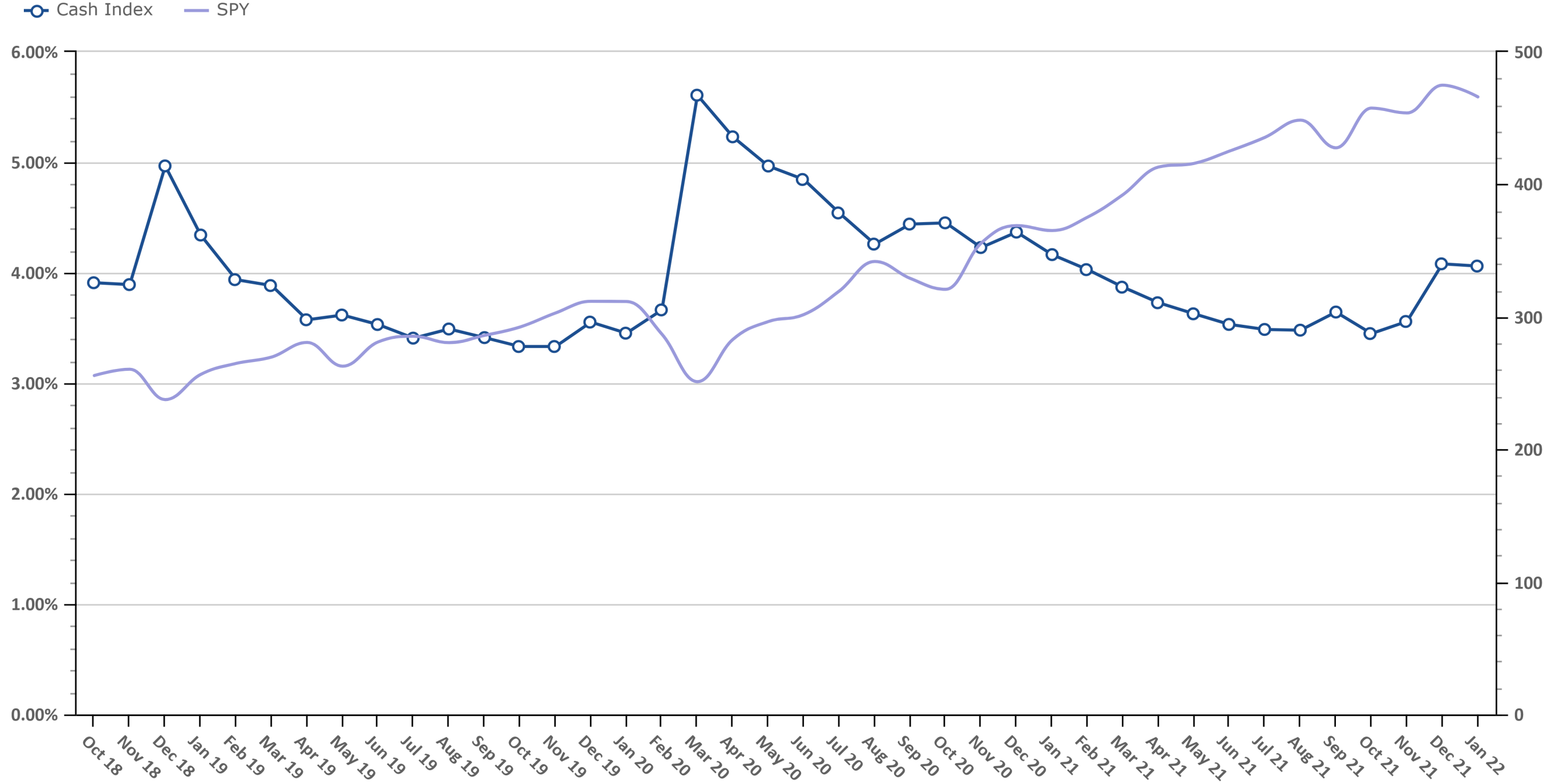
Your feedback is crucial to making this report most beneficial to advisors like you. If you have any comments on the data we show in this report or additional metrics you'd like to see included, please email feedback@envestnetintelligence.com. We'd love to hear from you.

215.240.7063

Cash Levels Index

Data Up Through: 01/07/2022

Notes: The Cash Levels Index is the sum of cash and cash equivalents as a percentage of AUM.

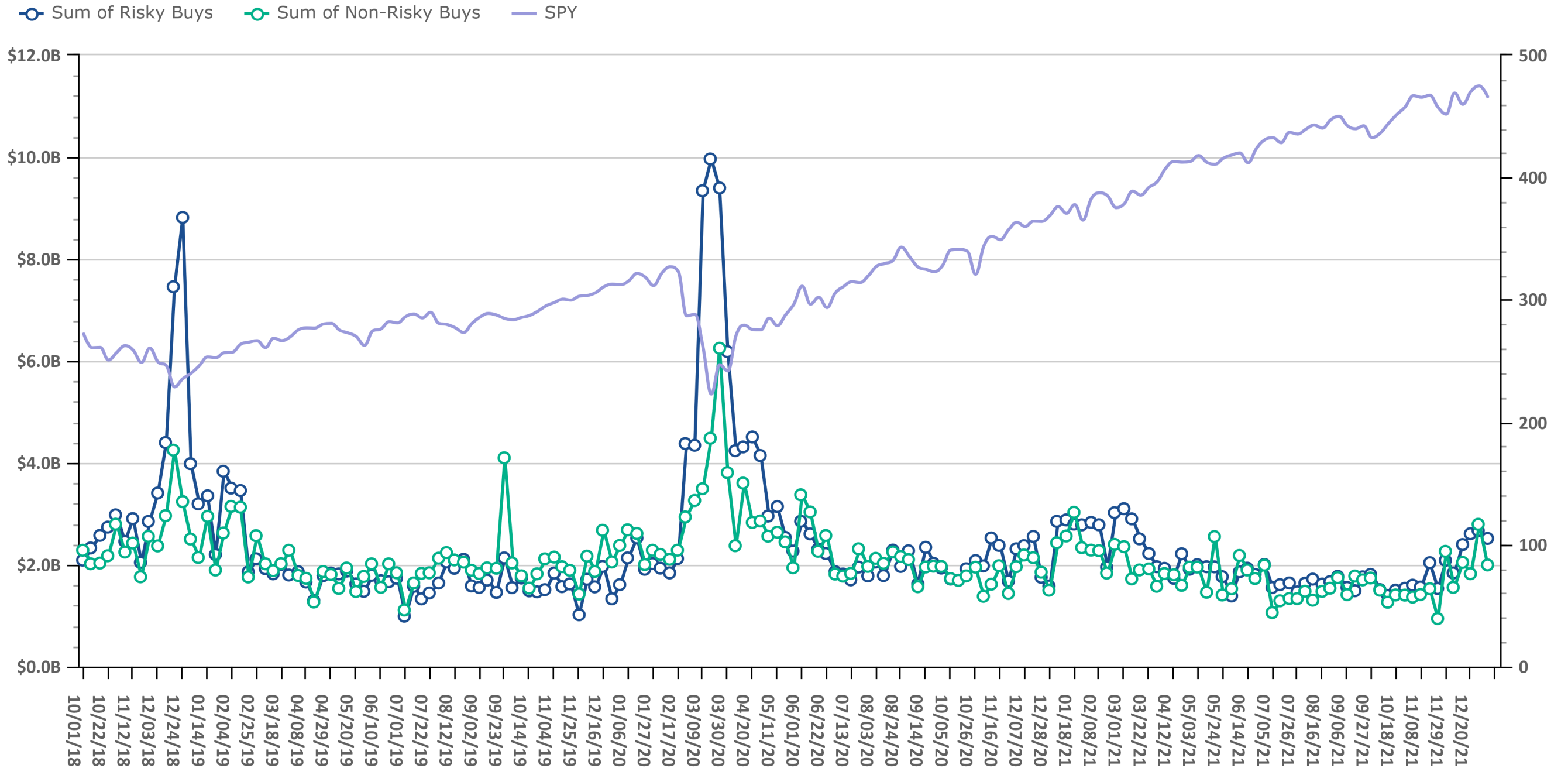


Source: Investnet Wealth Management Platform

Risk On vs. Risk Off Sums

Data Up Through: 01/07/2022

Notes: Risk On vs. Risk Off displays the sum of both "risky" and "non-risky" buys. See the disclosure for a definition of Risk On & Risk Off.

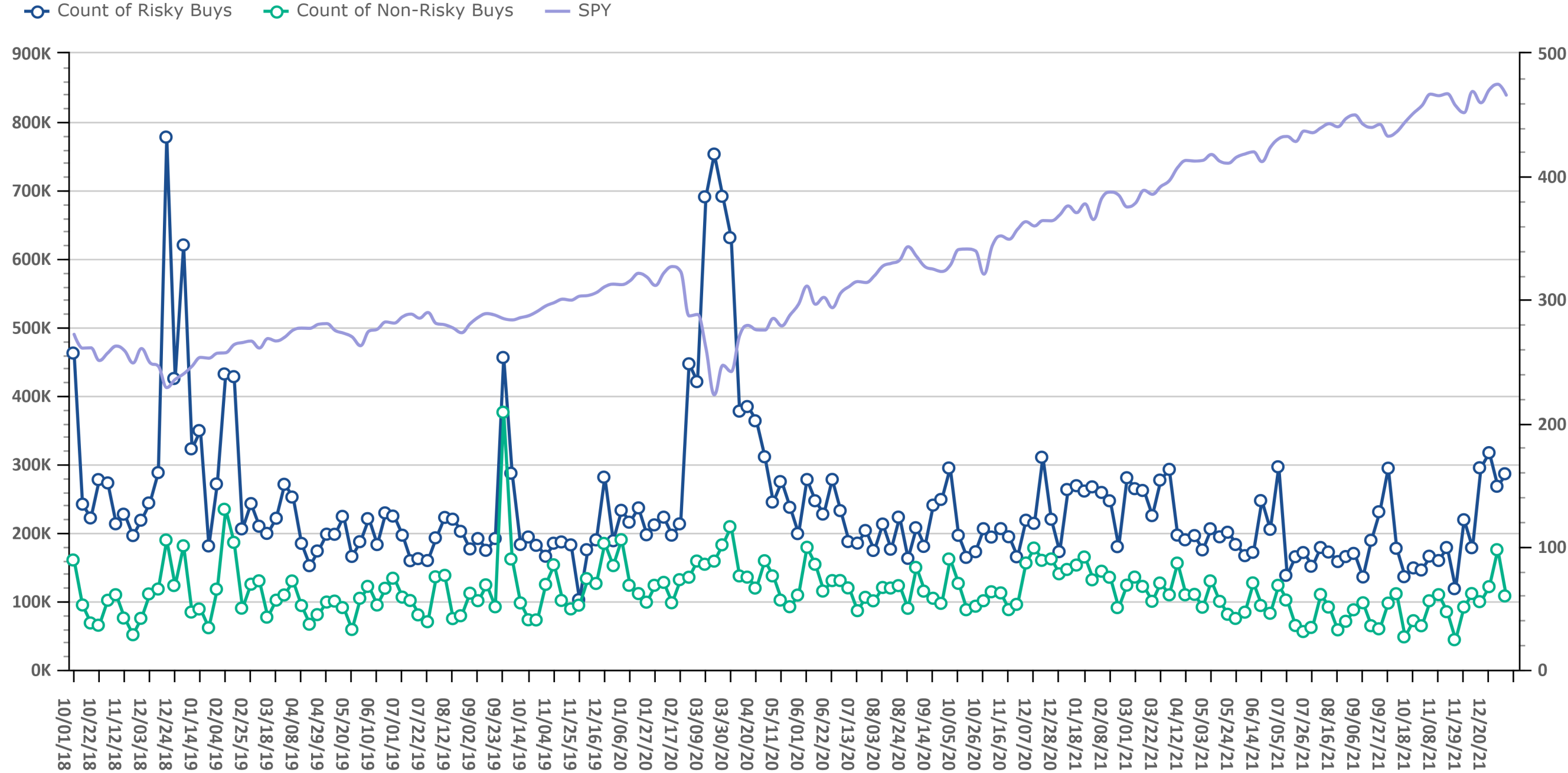


Source: Investnet Wealth Management Platform

Risk On vs. Risk Off Volume

Data Up Through: 01/07/2022

Notes: Risk On vs. Risk Off displays the count of both "risky" and "non-risky" buys. See the disclosure for a definition of Risk On & Risk Off.

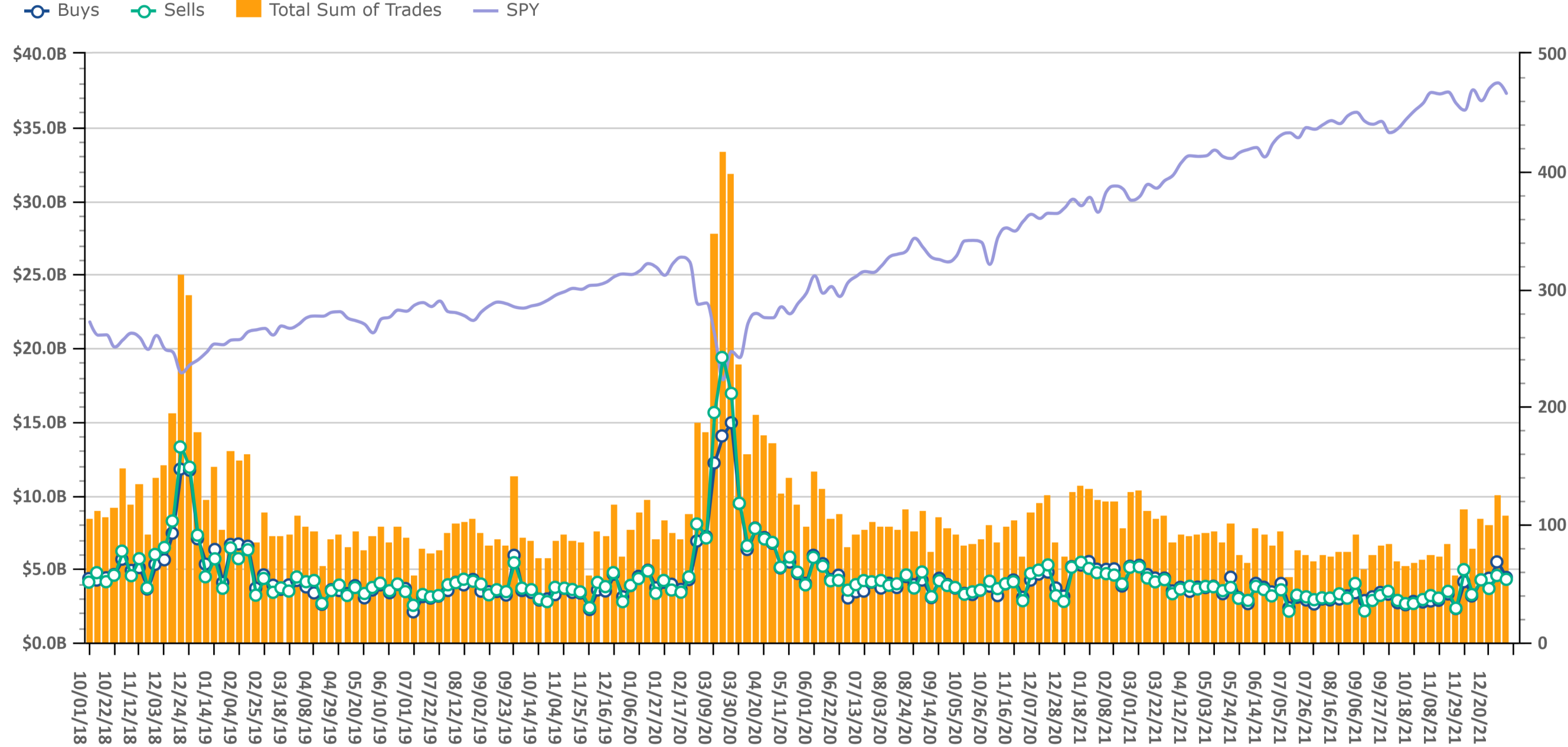


Source: Investnet Wealth Management Platform

Trading Amount

Data Up Through: 01/07/2022

Notes: Sum of trades measures the total sum of buy and sell transactions in mutual funds, ETFs, & equities.

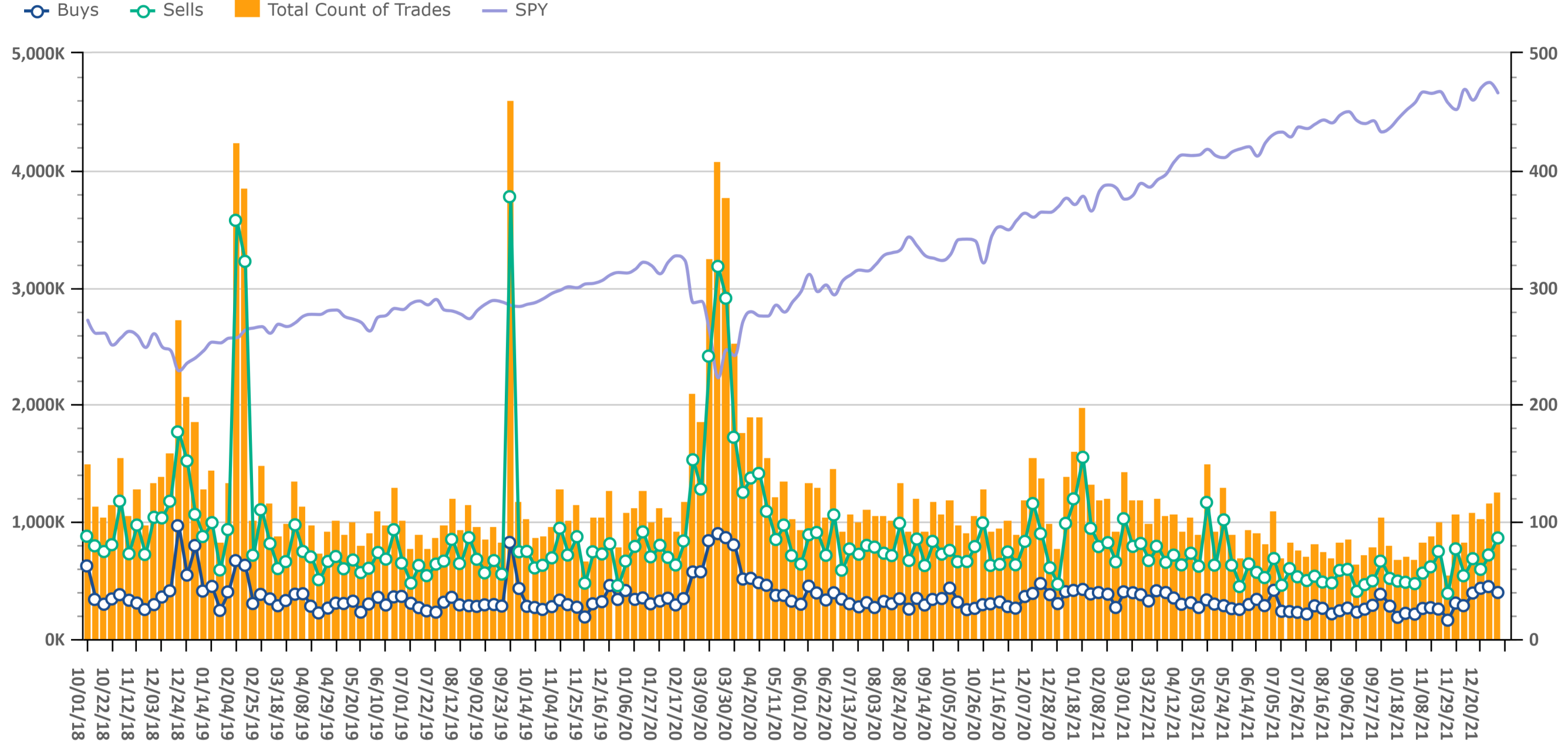


Source: Investnet Wealth Management Platform

Trading Volume

Data Up Through: 01/07/2022

Notes: Count of trades measures the total number of buy and sell transactions in mutual funds, ETFs, & equities.

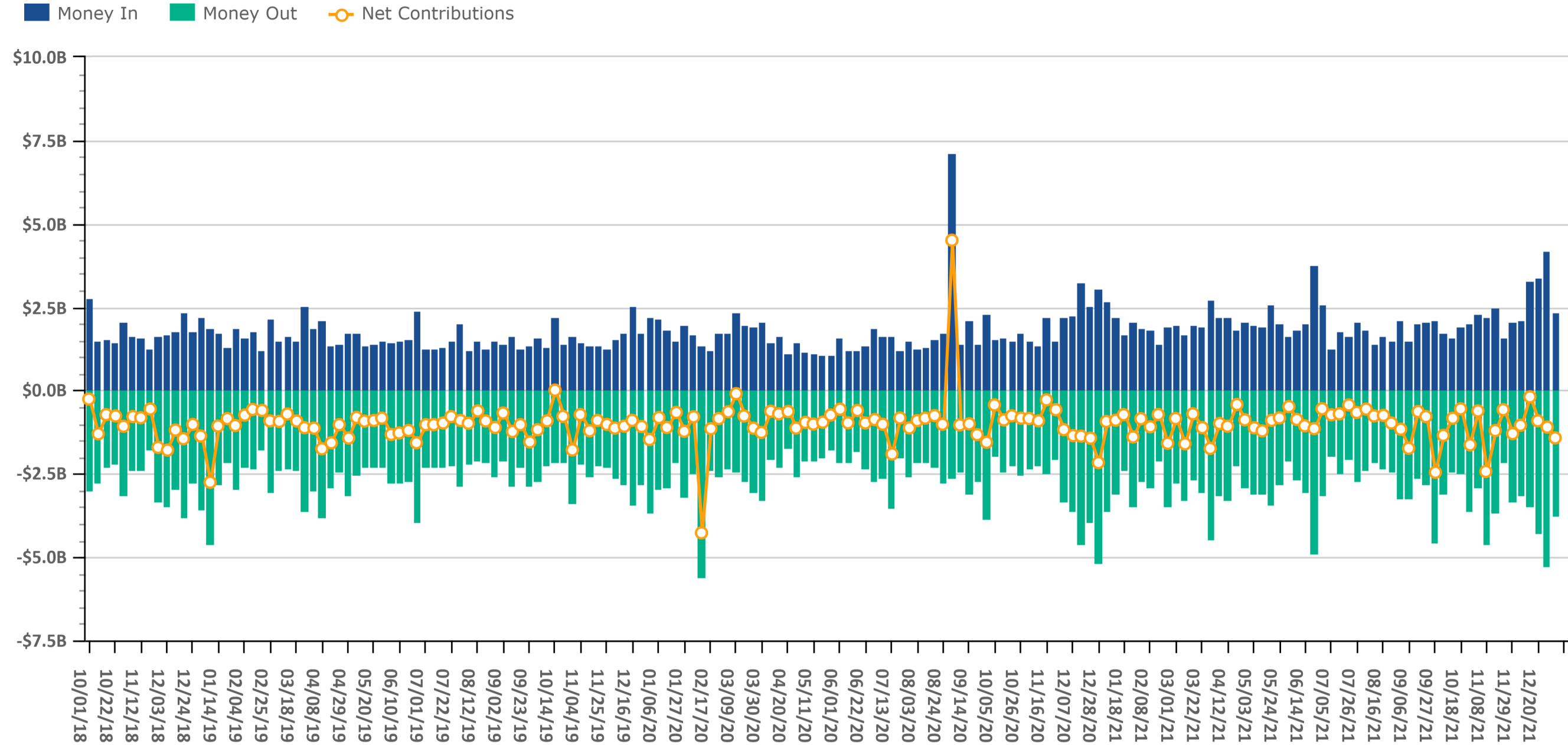


Source: Investnet Wealth Management Platform

Client Contributions

Data Up Through: 01/07/2022

Notes: Money In is the amount of contributions made by clients into existing accounts. Money Out is the amount of withdrawals made by clients out of existing accounts.

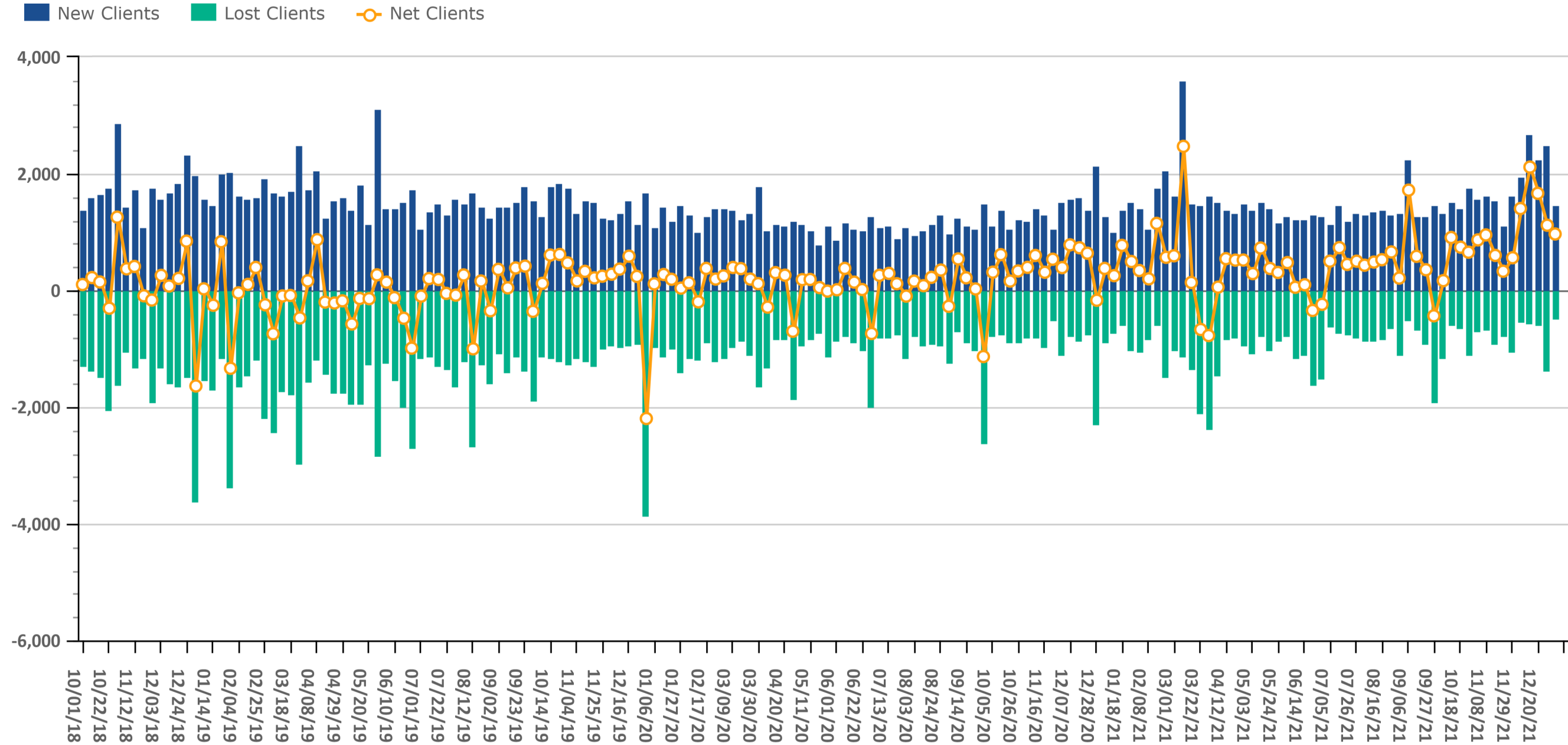


Source: Investnet Wealth Management Platform

Client Growth

Data Up Through: 01/07/2022

Notes: Client Growth measures new and lost clients.



Source: Investnet Wealth Management Platform



ADVISOR SERVICES
EXCHANGE

Introducing
the Envestnet Advisor Services Exchange
by Dynasty Financial

The Advisor Services Exchange (ASx) is dedicated to protecting and growing RIA enterprise value by empowering advisors and their firms with data, analytics, and insights.

We built ASx with eight unique data-driven offerings specifically designed for RIA's because RIA's that use analytics and manage their firm by the numbers are more profitable and have better valuations than those that don't.



Data & Analytics



Capital Strategies



M&A Strategy



Performance Marketing



The CFO Program



Smart Compliance



Intelligent Investments



Transition Services

Schedule a personalized meeting with an ASx Specialist ready to help you increase your RIA's valuation.

Send an email to info@advisorservicesexchange.com

Want to learn more? Visit us at <https://www.advisorservicesexchange.com>

Combined Mutual Fund & ETF Styles by Net Flows

Data Up Through: 01/07/2022

Weekly Highest Styles : Higher Ranks have best Net Flows

Style	Weekly Rank	Weekly Delta
Int'l Developed Mkts	1	0
High Yield	2	3▲
Int'l Emerging Mkts	3	-1▼
Inflation-Protected Bond	4	5▲
Bank Loan	5	7▲
International Bond	6	13▲
Multi-Strategy	7	4▲
Inverse	8	28▲
Short Muni	9	-5▼
Alternative Fixed Income	10	5▲

YTD Highest Styles

Style	YTD Rank
Int'l Developed Mkts	1
High Yield	2
Int'l Emerging Mkts	3
Inflation-Protected Bond	4
Bank Loan	5
International Bond	6
Multi-Strategy	7
Inverse	8
Short Muni	9
Alternative Fixed Income	10

Weekly Lowest Styles : Higher Ranks have worst Net Flows

Style	Weekly Rank	Weekly Delta
Large-Cap Growth	1	30▲
Mid-Cap Growth	2	22▲
Long Bond	3	0
Large-Cap Value	4	32▲
Foreign Large Cap Growth	5	-3▼
Large-Cap Core	6	-5▼
Mid-Cap Value	7	9▲
Leveraged	8	-2▼
Small-Cap Growth	9	3▲
Intermediate Bond	10	27▲

YTD Lowest Styles

Style	YTD Rank
Large-Cap Growth	1
Mid-Cap Growth	2
Long Bond	3
Large-Cap Value	4
Foreign Large Cap Growth	5
Large-Cap Core	6
Mid-Cap Value	7
Leveraged	8
Small-Cap Growth	9
Intermediate Bond	10

Source: Investnet Wealth Management Platform

Highest & Lowest MFs & ETFs by Net Flows

Data Up Through: 01/07/2022

Weekly Highest Mutual Funds

Security Description	Weekly Rank	Weekly Delta
SWPPX - Schwab S&P 500 Index	1	5,122▲
DGCFX - DFA Global Core Plus Fixe	2	97▲
BFRIX - BlackRock Floating Rate I	3	254▲
MCFQX - Mercer Core Fixed Income	4	-3▼
VUSFX - Vanguard Ultra-Short-Term	5	56▲
JHEQX - JPMorgan Hedged Equity I	6	33▲
JSDSX - JPMorgan Short Duration C	7	1▲
FSPSX - Fidelity International I	8	224▲
DURPX - DFA US Hi Relatv Profitab	9	151▲
BSIIX - BlackRock Strategic Incom	10	5,149▲

Weekly Lowest Mutual Funds

Security Description	Weekly Rank	Weekly Delta
DUSQX - DFA US Large Cap Equity I	1	581▲
VVIAX - Vanguard Value Index Adm	2	451▲
NWCIX - Nationwide Core Plus Bond	3	-2▼
DFAPX - DFA Investment Grade I	4	4▲
INVNX - Evolutionary Tree Innovat	5	3,779▲
TCDIX - Touchstone Sands Capital	6	4,721▲
DFGBX - DFA Five-Year Global Fixe	7	5,179▲
TRBCX - T. Rowe Price Blue Chip G	8	924▲
DFQTX - DFA US Core Equity 2 I	9	73▲
DFREX - DFA Real Estate Securitie	10	255▲

Source: Investnet Wealth Management Platform

Weekly Highest ETFs

Security Description	Weekly Rank	Weekly Delta
FLRN - SPDR Blmbg Barclays Inv G	1	1,489▲
JNK - SPDR Blmbg Barclays High Y	2	151▲
RSP - Invesco S&P 500 Equal Weig	3	26▲
IEFA - iShares Core MSCI EAFE	4	11▲
SCHD - Schwab US Dividend Equity	5	18▲
VOO - Vanguard 500 ETF	6	1,462▲
NTSI - WISDOMTREE INTRNAT EFCNT C	7	-5▼
BOND - PIMCO Active Bond ETF	8	-7▼
SCHP - Schwab US TIPS ETF	9	15▲
VO - Vanguard Mid-Cap ETF	10	55▲

Weekly Lowest ETFs

Security Description	Weekly Rank	Weekly Delta
SPY - SPDR S&P 500 ETF	1	3▲
USFR - WisdomTree Floating Rate T	2	187▲
IVV - iShares Core S&P 500	3	1,491▲
TLT - Ishares 20 Plus Year Treasu	4	1,241▲
SWAN - Amplify BlackSwan Gr & Trs	5	-4▼
WCLD - WisdomTree Cloud Computing	6	117▲
VTI - Vanguard Total Stock Market	7	1,479▲
IGV - iShares Expanded Tech-Softw	8	1,182▲
IVW - iShares S&P 500 Growth	9	391▲
MINT - PIMCO Enhanced Short Matur	10	1,498▲

Weekly Stock Buys & Sells

Data Up Through: 01/07/2022

Weekly Buys | Stocks

Security Description	Weekly Rank	Weekly Delta
T - AT&T Inc	1	12▲
IBM - International Business Mach	2	40▲
MDT - Medtronic PLC	3	13▲
AMZN - Amazon.com Inc	4	-2▼
MSFT - Microsoft Corp	5	6▲
MRK - Merck & Co Inc	6	65▲
NVDA - NVIDIA Corp	7	5▲
PYPL - PayPal Holdings Inc	8	-3▼
VZC - Verizon Communications Inc	9	-2▼
TSLA - Tesla Motors Inc	10	-4▼
XOM - Exxon Mobil Corp	11	18▲
LMT - Lockheed Martin Corp	12	50▲
ACC - American Campus Communities	13	1,035▲
GM - General Motors Co	14	136▲
DGX - Quest Diagnostics Inc	15	826▲
CVX - Chevron Corp	16	15▲
CSGP - CoStar Group Inc	17	207▲
AAPL - Apple Inc	18	-14▼
PFE - Pfizer Inc	19	57▲
TGT - Target Corp	20	24▲
DIS - Walt Disney Co	21	-18▼
QCOM - QUALCOMM Inc	22	86▲
RDS.A - Royal Dutch Shell PLC	23	237▲
BRK.B - Berkshire Hathaway Inc B	24	87▲
F - Ford Motor Co	25	71▲

Weekly Sells | Stocks

Security Description	Weekly Rank	Weekly Delta
AAPL - Apple Inc	1	0
MSFT - Microsoft Corp	2	2▲
PFE - Pfizer Inc	3	24▲
DAL - Delta Air Lines Inc	4	221▲
COST - Costco Wholesale Corp	5	77▲
DG - Dollar General Corp	6	272▲
LUV - Southwest Airlines Co	7	58▲
DOCU - DocuSign INC	8	20▲
ZTS - Zoetis Inc	9	164▲
NVDA - NVIDIA Corp	10	4▲
AMZN - Amazon.com Inc	11	-1▼
GOOGL - Alphabet Inc A	12	-1▼
ACN - Accenture PLC A	13	59▲
CSCO - Cisco Systems Inc	14	36▲
AVGO - Broadcom Inc Com	15	108▲
HD - The Home Depot Inc	16	28▲
BRK.B - Berkshire Hathaway Inc B	17	23▲
CERN - Cerner Corp	18	88▲
VZC - Verizon Communications Inc	19	-10▼
JNJ - Johnson & Johnson	20	35▲
VEEV - Veeva Systems Inc	21	221▲
ADBE - Adobe Systems Inc	22	15▲
HPQ - HP Inc	23	446▲
PG - Procter & Gamble Co	24	43▲
SHOP - Shopify Inc	25	41▲

Source: Investnet Wealth Management Platform

Data Content

Our goal with this weekly compendium of industry metrics and indices is to inform the report's consumer about the investment, risk and business activities executed by RIAs across the nation. We believe this information will provide advisors with near real time insights that may help them improve their business and client outcomes.

The data included in the RIA Pulse metrics comes from our wealth management solutions databases, which include Investnet and Tamarac data. We filter the data those firms and advisors who we have segmented as Registered Investment Advisors (RIAs). The data is de-identified and aggregated to create a representative set of metrics and indices. We curate the data to eliminate data which we deem to be incomplete, having insufficient history, or have minimal contribution to the metrics. We reevaluate the components and qualifiers of the metrics and indices on at least an annual basis in an effort to keep our RIA index representative of advisors' inferred attitudes and actual behaviors.

Risk On includes all individual equities (stocks). Risk On also includes equity focused mutual fund and ETF styles. This includes Large Cap, Mid Cap, Small Cap, International, and Emerging Markets.

Risk Off includes all individual fixed income instruments. Risk Off also includes fixed income focused mutual fund and ETF styles. This includes Taxable, Muni, Bank Loan, and International Fixed Income.

Risk On & Risk Off exclude buys and sells of Cash/Money Markets, Balanced/Asset Allocated, and Alternative styles.

Disclosure

The information, analysis, and opinions expressed herein are for general information only. Nothing contained in this document is intended to constitute legal, tax, securities, or investment advice, nor an opinion regarding the appropriateness of any investment, nor a solicitation of any type. Investing carries certain risks and there is no assurance that investing in accordance with the portfolios mentioned will provide positive performance over any period of time. Investors could lose money if they invest in accordance with the portfolios discussed herein. Past performance is not indicative of future results. Index performance is presented for illustrative purposes only and does not represent the performance of any specific investment product or portfolio. Fees and expenses are not included in the performance of an index. Fees and expenses will reduce performance. An investment cannot be made directly into an index.

The information contained herein has been obtained from sources believed to be reliable, but its accuracy and completeness are not guaranteed. News feeds, data feeds, market quotes, and other links on this Investnet Enterprise Portal are provided by independent third parties and are not guaranteed to be accurate, complete, or timely (including any information or data sources provided by Advisor or provided by third parties at the direction of Advisor). The news, market quotes, and links provided are shown for your convenience only. Linked web-sites are independent and are not owned or operated by Investnet Financial Technologies. Investnet Financial Technologies does not endorse any linked web-sites, nor does Investnet Financial Technologies guarantee the timeliness, accuracy, completeness or adequacy of any information posted on the linked web-sites. Investnet Financial Technologies does not necessarily agree with any opinion, outlook, or forecast stated on any linked web-site. Investnet Financial Technologies reserves the right to terminate, modify, or change the links, news sources, and market quote sources at any time without notice.

FOR HOME OFFICE AND ADVISOR USE ONLY. NOT FOR DISTRIBUTION TO THE PUBLIC.

© 2021 Investnet, Inc. All rights reserved.